

juwi Monitoring, Operation & Maintenance Services in India

Anything
Is Possible

➤ Brief About juwi O&M

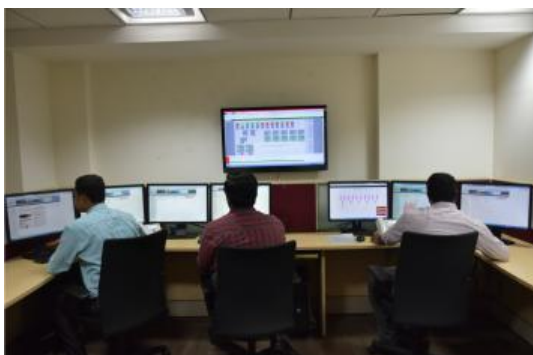
juwi is a successful project developer of renewable energy plants. Founded in 1996 by Fred Jung and Matthias Willenbacher in Germany, the juwi group is now a global player and has realized more than 2,000 plants with more than 2,000 megawatts globally and over 162 megawatts in India starting from 2011.

Once a PV plant has been successfully connected to the grid, juwi can also take over service and operational management. juwi Germany and juwi India is certified according to ISO 9001 systems and can thus offer the best service possible.

The juwi group is currently executing O&M of 720 MW globally and 390 MW in Asia for solar power plants of utility grade. juwi has successfully completed 15 years of O&M operations globally and 4 years of operations in India for both juwi built PV plant and also the plants built by others.

With juwi's technical and commercial management team, our clients can be assured of stable returns. We make sure that PV plant is generating power as efficiently and cost-effectively as possible throughout its lifecycle.

➤ Our vision - 100% Renewable Energy



The Assets monitored and maintained by juwi have CUF of up to 24% in India. The availability of plants have exceeded 99.8% in the first four years of operations, ensuring high return on investment to the owner.

juwi Monitoring Services and O&M is backed by a dedicated engineering team for in depth analysis and optimal performance, catering to India, Thailand Philippines and Australia.

➤ What we can do

juwi extends comprehensive and customized O&M services of a PV plant, whose service includes but not limited to full cycle Monitoring, Operation and Maintenance of PV Assets, module cleaning, spares management, plant security, vegetation removal, warranty administration & coordination with utility activities necessary during O&M including predictive maintenance.

➔ Response time during O&M

Through onsite, Regional, centralized SCM and OFF site engineers juwi ensures that the preventive, predictive and corrective maintenance are carried out at scheduled and shortest possible time. For effective Asset Management, ticketing system for corrective, preventive and predictive maintenance juwi uses CMMS software.

➔ Expertise

juwi has the expertise for in depth analysis of plant performance, performance prediction to ensure the optimal generation and initiate appropriate measures for improving the performance. juwi has core group of engineers who will review, analyze and suggest corrective measures for meeting the predicted & enhanced generation.

➔ India References (below are the few references for EPC +O&M and Third party O&M)



Capacity : 5.2MW
Location Country :
India, Tinwari, Jodhpur
O&M Since : 2011



Capacity : 5 MW
Location Country :
India Gujarat
O&M Since : 2011



Capacity : 10 MWp
Location Country :
India, Gujarat,
Meravadar
O&M Since : 2011



Capacity : 51 MWp
Location Country : India,
Gujarat Charanka
O&M Since : 2015



Capacity : 26.4 MWp
Location Country :
India, Rajasthan,
Bap
O&M Since : 2013



Capacity : 15MWp
Location Country :
India, Gujarat
O&M Since : 2013, Third
Party EPC

➔ Redundancy Plan

juwi has a robust redundancy and data acquisition method. This involves both for storage redundancy and power redundancy. The data collected along with redundancy option is also taken for backup option on regular intervals.

➔ Resources

juwi has experienced engineers for onsite analysis, monitoring and performance improving techniques. Additionally, juwi has channel partners from various regions for contingency and cost optimization plan. Juwi has well equipped back office support for full cycle operation of PV Assets with end to end solution.

Ashish Vyas

AM O&M (North Region)
juwi India Renewable Energies Pvt Ltd
Mobile no. : +918003696036
v.ashish@juwi.in · www.juwi.in

For details & Enquiry contact

L.Raju

DGM
juwi India Renewable Energies Pvt Ltd
Samhita Plaza - N° 248 · 1st Floor · 80 Feet Road
Defence Colony · Indiranagar
Bangalore · 560038
Tel. +91.80.49059040 · Mobile +91.9900082399
Fax. +91.80.49059009
l.raju@juwi.in · www.juwi.in

Nilesh Kacha

(Central and Western Regional O&M Incharge)
juwi India Renewable Energies Pvt Ltd
Mobile +91.9662517814
N.Nileshh@juwi.in · www.juwi.in